



Enhancing Katahdin Region education through “the process of using community as a starting point to teach concepts in areas across the curriculum. Emphasizing hands-on, real-world experiences, this approach to education increases achievement, helps students develop stronger ties to their community, enhances students’ appreciation for the natural world, and creates a commitment to serving as active, contributing citizens”.

What is the Place-Based Learning Project?



Katahdin Woods and Waters National Monument in partnership with regional schools and the National Park Foundation has created a project to help build the foundation for the future of educational partnerships. Through the hiring of two educators, the Katahdin Region Place-Based Learning Project was born. Main goals include supporting teachers in creating place-based/outdoor-education material for students through workshops and curriculum-based tours in order to discover, promote and share the many community and outdoor

resources in the Katahdin Region, especially those that offer opportunity to area students in the form of standards-based projects.

Place-Based Learning Teacher Workshop

In June, teachers worked with facilitators to explore possible hands-on classroom projects for the coming year. Lasting connections were made as teachers dined, fished and hiked in the area, collaborating and connecting throughout the two day event.



Students Experience Archaeology

Students visited Katahdin Woods and Waters National Monument in July to walk from Hunt Farm, along the old corduroy road, to Lunksoos spotting mushrooms and historic mementos along the way. They arrived at Lunksoos and were greeted by National Park Service archeologists who took students through a whirlwind adventure scouring the area for pieces of the past.

Teachers Tour the Loop Road

Teachers from the Katahdin region toured Katahdin Woods and Waters National Monument with their children. The van tour guided the group around the loop road, periodically stopping to explore some of the many short walks found as one travels through the monument. After a picnic lunch at Lunksoos, the group discussed what they had seen during the tour and how the monument and other outdoor activities might benefit education in the area.



Upcoming Events

August 19, 6-9: Wild Maine Weekend Outing Club Fundraiser

August 25-25, 2017: Teens To Trails "[Life Happens Outside](#)" Festival

September 9-16, 2017: [BikeMaine](#) student outing club volunteer event

September 16, 2017: Stars Over Katahdin

September 27, 2017: [Teens To Trails](#) teacher training

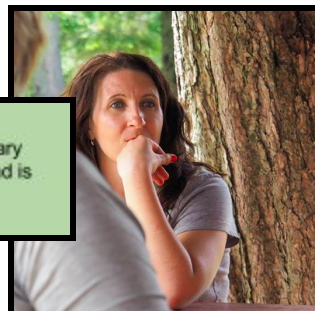
October TBD: Teacher "PBL Meet & Greet"

Katahdin Region Place-Based Learning Project Staff Introduction



Kala J. Rush, Place-Based Educator
Kala teaches high school English and outdoor education. Her background in alternative, outdoor and place-based education started in the conservation corps and drives her passion still today.

Scarlet McAvoy, Place-Based Educator
Scarlet is a first grade teacher at Katahdin Elementary School. She has deep roots in the Katahdin area and is well known as a hard-working, passionate teacher.



Thank you!

Thank you to our
partners in the
Katahdin Region:

Lumbermen's
Museum

Elliotsville Plantation

Katahdin Woods and
Waters National
Monument

International
Appalachian Trail

Join us! Contact Kala at
krush@rsu50.org or Scarlet at
smcavoy@rsu50.org.

Watch for our next newsletter and find and follow us on Facebook!
<https://www.facebook.com/krpblp/>
