

Enhancing Katahdin Region education through “the process of using community as a starting point to teach concepts in areas across the curriculum, emphasizing hands-on, real-world experience.”

KATAHDIN ELEMENTARY EXPLORES THE MONUMENT

This fall, students from KES travelled to Katahdin Woods and Waters National Monument to learn about their land. They found many signs of beaver and learned some basic "leave no trace" lessons. Susan Adams with Elliotsville Plantation deemed this group the youngest Volunteers in Parks (VIPs), due to some light trail work. Scott Martin of the Maine Game Warden Service spoke to the group of young learners with his animal pelts and skulls. The experience will serve as a wonderful future model of place-based learning in the region.



STUDENT LED CONFERENCES BENEFIT FROM CHANGES

Katahdin Schools implemented exciting changes at their most recent student-led conference. Students were asked to incorporate examples of community and self-led projects into their Maine Guiding Principles, a set of principles that are required before students graduate. Many students volunteered their time at the event and also discovered the many ways they are learning using their local region.

PARK IN EVERY CLASSROOM EVENT A SUCCESS

A team from the Katahdin region was thrilled to gather at the Eleanor Roosevelt National Historical Site in New York with other teams from across the northeast to exchange ideas for partnering to give students more engaging and place-based learning opportunities in their regions.



WOMEN'S CLUB TO EXPAND EDUCATIONAL OPPORTUNITIES

The Patten Area Women's Club invited place-based educators to a recent meeting, resulting in a new, local project beginning in the spring of 2018. The Patten Academy, once a school and now a park, has the potential to be the region's newest service learning project focussing on the history and culture of the region.

MEDWAY HISTORICAL SOCIETY LEADS AS A PBL EXAMPLE

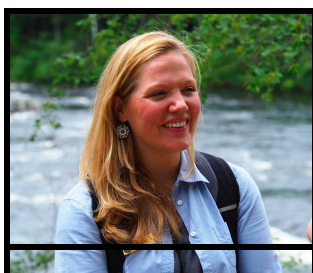
The Medway Middle School recently took a trip to Milo and Millinocket in order to visit other area historical societies. They gained a great deal of information about how other historical societies function. Students also learned about the military in the area and more specifically about local doctors, weapons, jewelry and tools. Students gathered a number of ideas from the experience and plan to implement many of the practices in the Medway Historical Society.



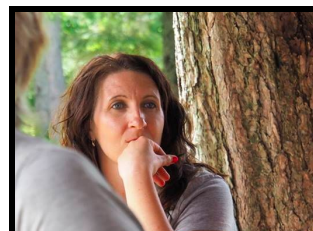
UPCOMING EVENTS

February 2: BikeMaine Student Meeting

February TBD: National Trails Day Project Preparation Meeting



Katahdin Region Place-Based Learning Project Staff Introduction



Scarlet McAvoy, Place-Based Educator
Scarlet is a first grade teacher at Katahdin Elementary School. She has deep roots in the Katahdin area and is well known as a hard-working, passionate teacher.

Thank you!

Thank you to our partners in the Katahdin Region:

Lumbermen's Museum

Elliotsville Plantation

Katahdin Woods and Waters National Monument

International Appalachian Trail

Join us! Contact Kala at krush@rsu50.org or Scarlet at smcavoy@rsu50.org. Watch for our next newsletter and find and follow us on Facebook! <https://www.facebook.com/krbplp/>